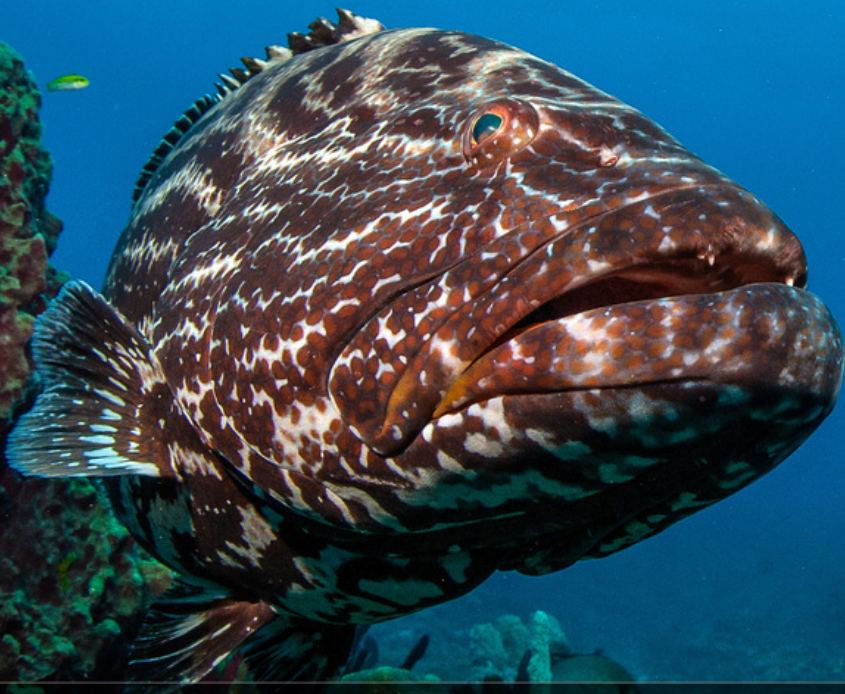




**FISH
FOREVER**



Making Positions and Statements of Support

Rare

Rare is the leading behavior change organization in conservation. Rare specializes in identifying proven locally-led solutions and works with partners and communities worldwide to bring these solutions to a regional and national scale.

FishForever

Fish Forever is Rare's community-led solution to revitalize coastal marine habitats, such as coral reefs, mangroves and seagrasses, protect biodiversity, and secure the livelihoods of fisher households and their communities. It uses an innovative approach to address coastal overfishing—by empowering communities through clear rights, strong governance, local leadership, and participatory management—that protects essential fish habitat and regulates fishing activities.

Cover photograph: © George Stoyale

© 2020 Rare



This material may be copied, in part or in whole, without permission, provided it is distributed free of charge and credit is given to Rare.

Rare Global Headquarters

1310 N. Courthouse Road, Suite 110, Arlington, VA, 22201, USA

Email: info@rare.org

Phone: 703.522.5070

www.rare.org

Contributors:

Paolo Domondon • Joyce Barafon • Tanmatra Bhanti • Atanasio Brito
• Dennis Calvan • Simone Madalosso • Gabriela Polo • Arwandrija
Rukma • Rocky Sanchez Tirona

Recommended citation:

FishForever (2020) Making Positions and Statements of Support.
Domondon, P. (Ed). Rare, Inc. Arlington, Virginia, 7 pp.

CONTENTS

<i>Background</i>	1
<i>Objectives</i>	1
<i>Principles</i>	1
<i>Definition of Policy Tools</i>	1
<i>Guidelines and Process on the Use of the</i> <i>Policy Tools</i>	2
<i>Competencies Required</i>	5
<i>Annex</i>	6



BACKGROUND

As Rare continues to build its credibility and reputation in delivering solutions for small-scale fisheries, there's been a significant number of requests from various local, national, and international networks, organizations and stakeholders on Rare's position and stand on fisheries and ocean related issues. In country, this is more evident as Rare continues to engage governments and national and local policy discussions. This guidance document provides frameworks on the use of Policy Statements, Announcements, or Signature of Support as policy tools to advance agenda and approaches by organizations and networks. This Guidance Document provides the overall framework on making positions and signing statements of support, including guidelines on when to use each policy tool, the principles behind each and processes to take.

OBJECTIVES

- Help equip country and policy teams be engaged in the important issues surrounding small-scale fisheries and relevant solutions.
- Provide guidelines and principles when and how to participate in this issues.
- Provide country and policy teams the process on when and how to use various policy tools.

PRINCIPLES

Policy Guidance documents will follow Rare basic policy principles outlined and explained in the Policy Operations Guidance Documents, specifically Guidance Documents on Lobbying and Political Advocacy. If there are identified risks, either legal, political or programmatic, these risks should be elevated and discussed with Rare's Policy and Partnerships Team who periodically tackle these in either or both the Fish Forever Leadership Team or the Public Fundraising and Partnerships Operating Team. Teams should also follow Partnership Guidance Documents that spell out the criteria for partner engagements including alignment with Rare's values and risk considerations.

DEFINITION OF POLICY TOOLS

- Rare Position Statements- are initiated and issued by Rare with the objective of directly promoting, enhancing, advancing or answering approaches, solutions, or issues in the global, national, or local level. These are strong and often necessary policy tools taken when the issue will significantly affect or is at the very core of Rare's work and/ or presence in country.
- Announcement of Commitments and Support- are those released by Rare to support another organization or government-

t's action, policy, contribution, or approach in the global, national, or local levels. This can be used to help support and affirm government's programs and projects that will directly contribute to small- scale fishers or advance Fish Forever principles and approach.

- Signatory on Position Papers or Call for Action- are initiated and led by other organizations and networks to support particular issues or actions needed. Since this is done together with others, this usually has more communication support and disseminated in various individual or collective platforms.
- TBD- Inputs to International and National Policies/ Consultations , etc.



GUIDELINES AND PROCESS ON THE USE OF THE POLICY TOOLS

Usage of any of the Policy Tools by either the Country teams or the Policy and Partnerships team should adhere and follow the following:

1. Aligned with the Principles and Direction of the Organization

- Rare is a 501c3 organization and it will not be involved in official lobbying processes unless it is decided by the Fish Forever Leadership Team informed by and discussed with the Policy and Partnerships Team.
- It is a non- profit, non- governmental and non- partisan organization. Any policies and /or issues monitored should either advance or support the Fish Forever and the country strategy, its programmatic and scaling objectives.
- Rare will not promote interests of any individual, staff or otherwise.
- Country teams are represented by VPs and other Senior Leaders and any statements of any of the members about related issues should adhere to the principles and guidelines in this document.

2. Any Position Statements released by Rare or country teams should meet the following criteria on top of the other principles and guide-

lines outlined in this document

- Aligned with Rare's agenda in the issues surrounding small- scale fisheries, including but not limited to the
 - Promotion, enhancement and advancement of preferential rights of small- scale fishers
 - Promotion, enhancement, and advancement of rights- based approaches in small-scale fisheries
- Will significantly contribute to international or national policies, will impact the program, advance the work in-country and/ or the communities that depend on Rare.
- No significant risks as determined by the risk assessment.

Process

- Check alignment and contribution of this action
- Conduct risk assessment
- If will be issued by Country team, strongly recommended by Country VP and in-country policy staff; discussed and consulted with the Policy and Partnerships Team
- If will be issued by Policy and Partnerships team, should be strongly recommended by head of GloDev and/or of Policy Team; discussed and consulted with FFLT and/ or the Policy Operating Team
- Both will need approval by Fish Forever Managing Director and Rare's COO

3. Any Announcement of Commitments and Support released by Rare or country teams should meet the following criteria on top of the principles and guidelines outlined in this document

- Aligned with Rare's agenda in the issues surrounding small- scale fisheries.
- Aligned with Tier 1 Issues (Issue Prioritization conducted with FFLT and by Country Teams?Guidance Document or Template).
- Proper due diligence of the organization or government agency – with no significant short term or long term risks (Guidance Document or Template on Conducting Due Diligence- Working with Governments and Partners).
- Will significantly contribute to international or national policies, will impact the program, advance the work in-country and/ or the communities that depend on Rare.
- No significant risks as determined by the risk assessment.

Process

- Check alignment and contribution of this action
- Conduct risk assessment
- Conduct due diligence
- If will be issued by Country team, strongly

recommended by Country VP and in- country policy staff; discussed and consulted with the Policy and Partnerships Team. Country level to be approved by Country VP.

→ If will be issued by Policy and Partnerships team, should be strongly recommended by head of GloDev and/or of Policy Team; discussed and consulted with FFLT and/ or the Policy Operating Team. Organizational level to be approved by Fish Forever Managing Director.

4. If Rare is invited to be a Signatory on Other's Position Statements, Papers or Calls to actions, it should meet the following criteria on top of the principles and guidelines outlined in this document:

- Aligned with Rare's agenda in the issues surrounding small- scale fisheries.
- Aligned with Tier 1 Issues (Issue Prioritization conducted with FFLT and by Country Teams?Guidance Document or Template).
- Proper due diligence of the organization or government agency – with no significant short term or long term risks (Guidance Document or Template on Conducting Due Diligence- Working with Governments and Partners).
- Will significantly contribute to international or national policies, will impact the program, advance the work in-country and/ or the communities that depend on Rare.
- No significant risks as determined by the risk assessment.





Process

- Check alignment and contribution of this action
- Conduct risk assessment
- Conduct due diligence
- Quick review by Donor Segment for any potential implications
- If will be issued by Country team, strongly recommended by Country VP and in- country policy staff; discussed and consulted with the Policy and Partnerships Team. Country level to be approved by Country VP
- If will be issued by Policy and Partnerships team, should be strongly recommended by head of GloDev and/or of Policy Team; discussed and consulted with FFLT and/ or the Policy Operating Team.

Organizational level to be approved by Fish Forever Managing Director, Rare's COO, and VP of Global Development

5. Initiating Use of these Policy Tools

Given the nature of issue discussions that happen globally or nationally, at any point in time either or both the central Policy and Partnerships Team and Country Teams can initiate the discussion on the use of these policy tools.

6. Implementation

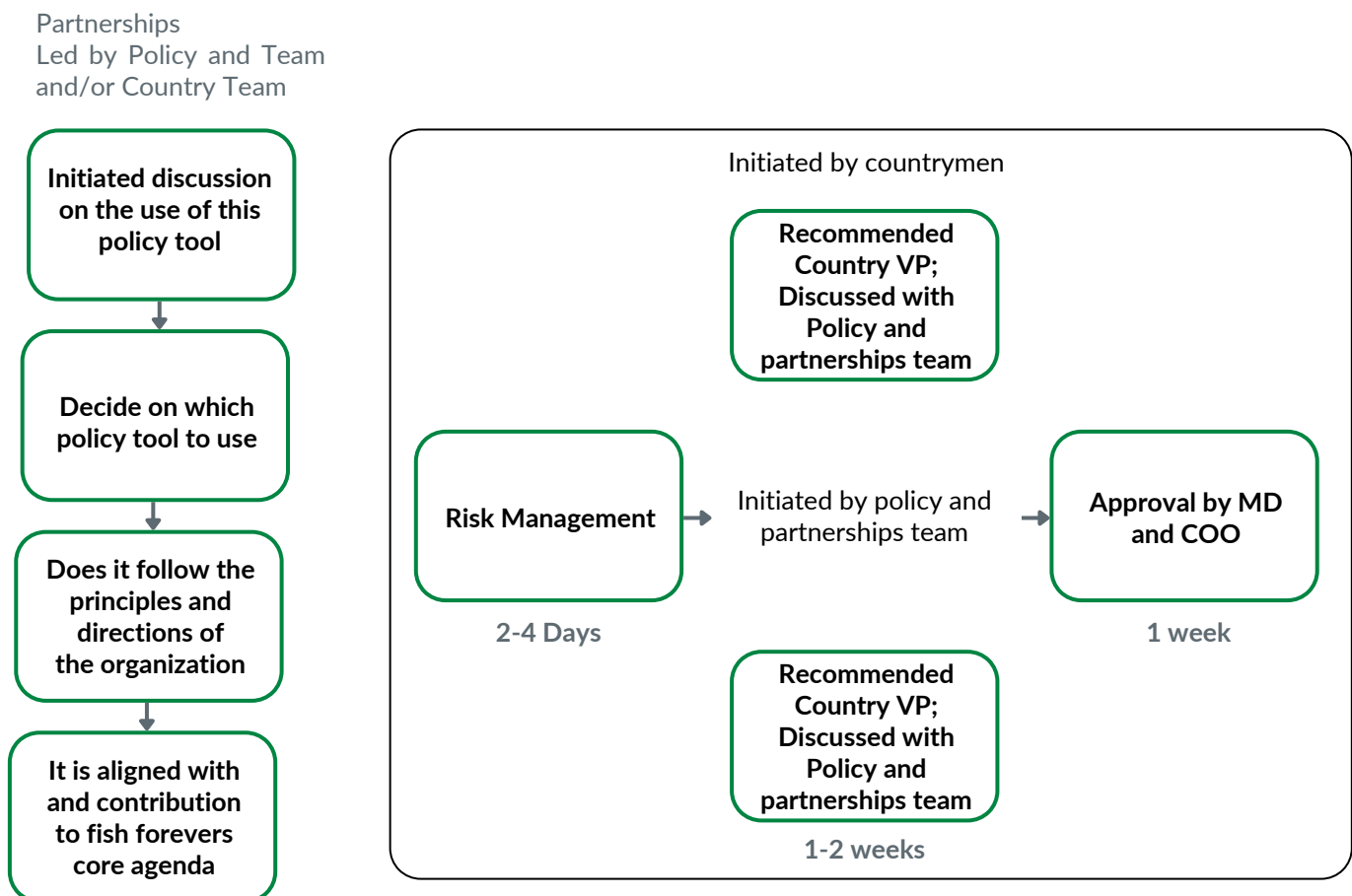
a. Risks and Mitigation Countries would need to conduct a risk assessment to identify risks to the program and reputation of Rare, high risk areas and ways to mitigate. The following are the initial proposed categories that countries need to fill up.

Risk and Mitigation	Likelihood	Impact
Political Cycle – involves risks due to political turnover because of elections, change in ministers or high level government official, change in administration, etc		
Engagement of Government Officials – involves risks due to unlawful practices of engaged government officials, including incidents of graft, corruption, abuse of power		
Legal Entity – involves risks due to practices that aren't allowed based on the by- laws, in-country registration, and Rare practices		
Risks by Association - risks being associated with partners and local governments that have proven unlawful practices.		
Donor requirements – risks due to non- compliance with donor government engagement policies		

b. Review and Assessment Together with the Policy and Partnerships team, in- country policy staff will do a mid- year and year- end review of all the released Policy Statements and Announcement of any Commitments and Support.

c. Working with Communication Team Usage of the Policy Tools above will need communication support and will be discussed on an ad hoc basis depending on the need and requirement of either the Policy and Partnerships team or in- country Policy Team. Considerations include capacity, resources, time and communication support provided by other involved organizations, and governments.

SAMPLE PROCESS AND APPROVAL TIMELINE FOR POLICY STATEMENTS



ANNEX

- Sample Due Diligence
- Sample Issue Prioritization and Process
- Sample Position Statement
- Sample Announcement of Commitment and Support
- Sample Statements Signed by Rare



**FISH
FOREVER**